

**PROBĂ SCRISĂ LA LIMBA ENGLEZĂ  
PENTRU ADMITEREA ÎN PROIECTUL „PAȘI SPRE EXCELENȚĂ”  
DISCIPLINA LIMBA ENGLEZĂ  
11.01.2025**

- Timp de lucru: 60 minute
- Punctaj total: 100 puncte. Se acordă 10 puncte din oficiu.

**Read the texts below:**

*Frosty, the snowman, is crazy about winter sports. As a guest in the English class, he talks about them to you and your colleagues.*

### **Winter Sports**

#### **Skiing**

Find your skis and let's go skiing!

There are lots of different types of skiing.

Alpine skiing is also known as downhill skiing. This type of skiing requires a big, snowy mountain to ski down.

Ski jumping is a type of skiing where skiers go off a big jump and fly through the air. This type of skiing can be dangerous and requires a lot of training.

Cross-country skiing is skiing on a flat surface. You need special types of skis that allow your feet to move up and down. Cross-country skiing can be a great way to enjoy the winter scenery.

Which type of skiing would you like to try?

#### **Skating**

Grab your skates and let's go skating!

There are many different types of skating.

Figure skating is a type of skating where the skater spins, jumps and makes different types of patterns on the ice. Figure skating looks a lot like dancing on ice. Figure skaters perform individually, in pairs or in groups.

Speed skating is another type of skating where the competitors race against each other to try and finish first. Whoever is the fastest skater, wins! The skaters race around an ice track.

Which type of skating do you prefer?





### Ice hockey

Take a hockey stick and let's play hockey!

There are six players from each team on the ice at a time. Each team tries to score a goal against the other team by hitting the puck in the net. Hockey players wear a lot of equipment to protect their bodies, including a helmet. A helmet is like a hard hat that protects your head.

### Broomball

Similar to ice hockey, broomball is played on ice or snow. The rules are very similar to ice hockey, but players try to hit a big ball in the net instead of a hockey puck. Although the game is played on ice, broomball players do not wear skates. Would you like to play ice hockey or broomball?

#### 1. Match the words with the correct definition. (10 points)

1. alpine skiing _____	a. a type of skating where competitors race against each other
2. balance _____	b. skiers go off a jump and fly through the air
3. figure skating _____	c. a point scored against the other team
4. ice hockey _____	d. something that team members wear to protect their body
5. goal _____	e. a type of hockey played with a ball
6. cross-country skiing ____	f. also known as 'downhill' skiing
7. broomball _____	g. being able to stand without falling
8. equipment _____	h. skater spin, jump and make different types of patterns
9. speed skating _____	i. skiing on a flat surface
10. ski jumping _____	j. a type of hockey played with a hockey puck

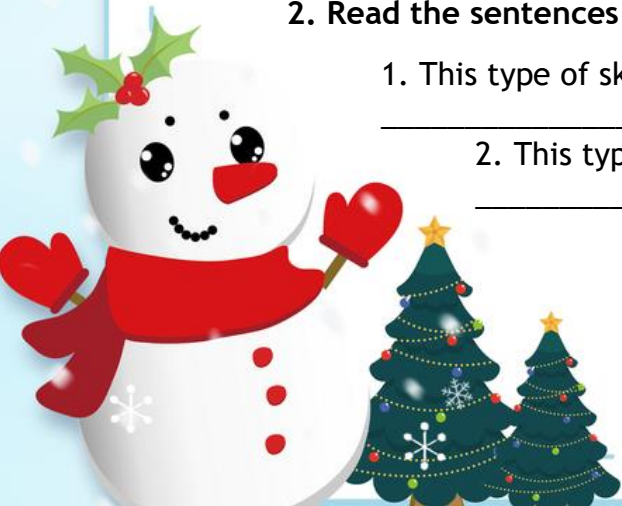
#### 2. Read the sentences below and fill in with the correct sport. (10 points)

1. This type of skiing can be dangerous and requires a lot of training:

\_\_\_\_\_

2. This type of skating is also a type of race:

\_\_\_\_\_





3. You do this type of skiing on a flat surface: \_\_\_\_\_
4. These two sports require the use of skates: \_\_\_\_\_ and \_\_\_\_\_
5. This type of sport is played on ice but does not require skates: \_\_\_\_\_

**3. Mark the sentences True or False. Correct the false ones in the space provided. (15 points)**

1. Sky jumping is also known as 'downhill' skiing. True/ False  
\_\_\_\_\_
2. Speed skaters race around an ice track True/ False  
\_\_\_\_\_
3. During an ice hockey game, there are eight players from each team on the ice. True/ False  
\_\_\_\_\_
4. Cross-country skiing is a nice way to enjoy winter scenery. True/ False  
\_\_\_\_\_
5. The rules in broom ball are similar to ice hockey. True/ False  
\_\_\_\_\_

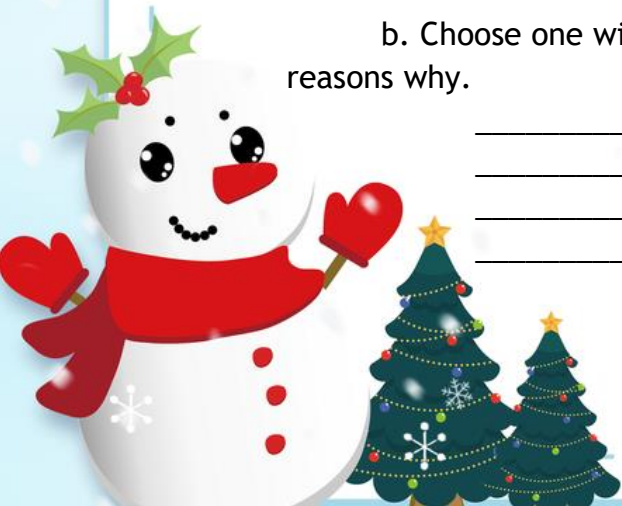
**4. Read the text again and answer the questions in the space provided. (5 points)**

- a. Which two winter sports are the most similar? Explain your reasoning.

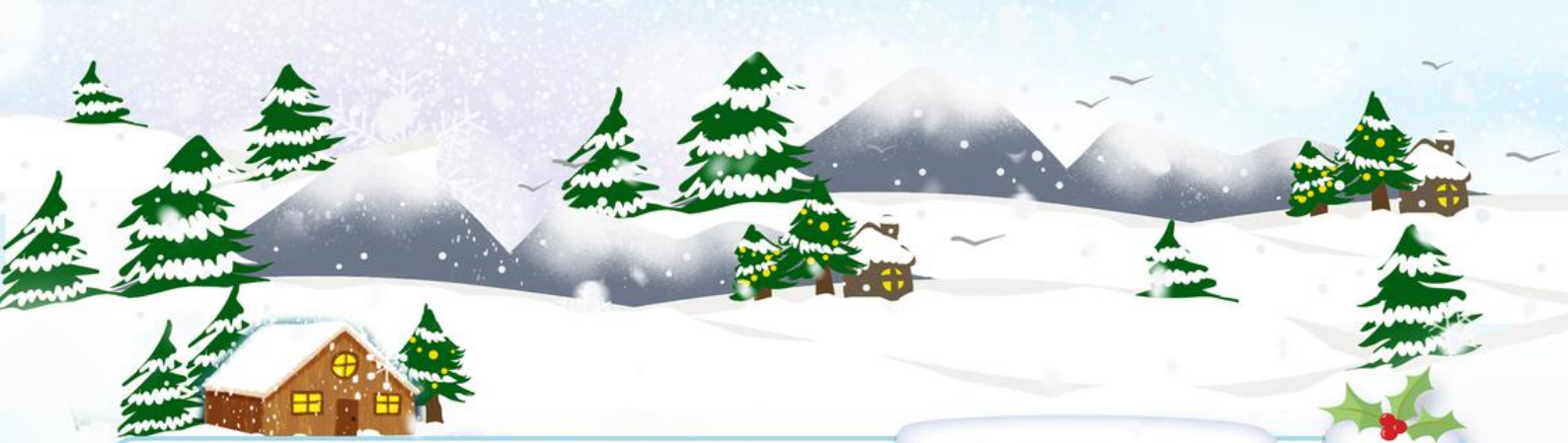
\_\_\_\_\_  
\_\_\_\_\_  
\_\_\_\_\_

- b. Choose one winter sport that you would like to try and provide two reasons why.

\_\_\_\_\_  
\_\_\_\_\_  
\_\_\_\_\_







5. Complete the sentences with the correct form of the verb in brackets. (10 points)

1. Look! It \_\_\_\_\_! (snow)
2. We always \_\_\_\_\_ skiing in the winter. (go)
3. Right now, she \_\_\_\_\_ gingerbread cakes. (make)
4. Henry usually \_\_\_\_\_ his winter holidays at his grandparents. (spend)

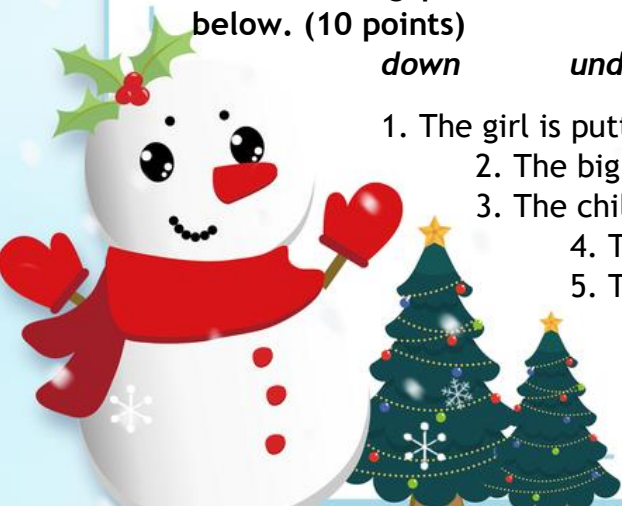
6. Look at the image below.

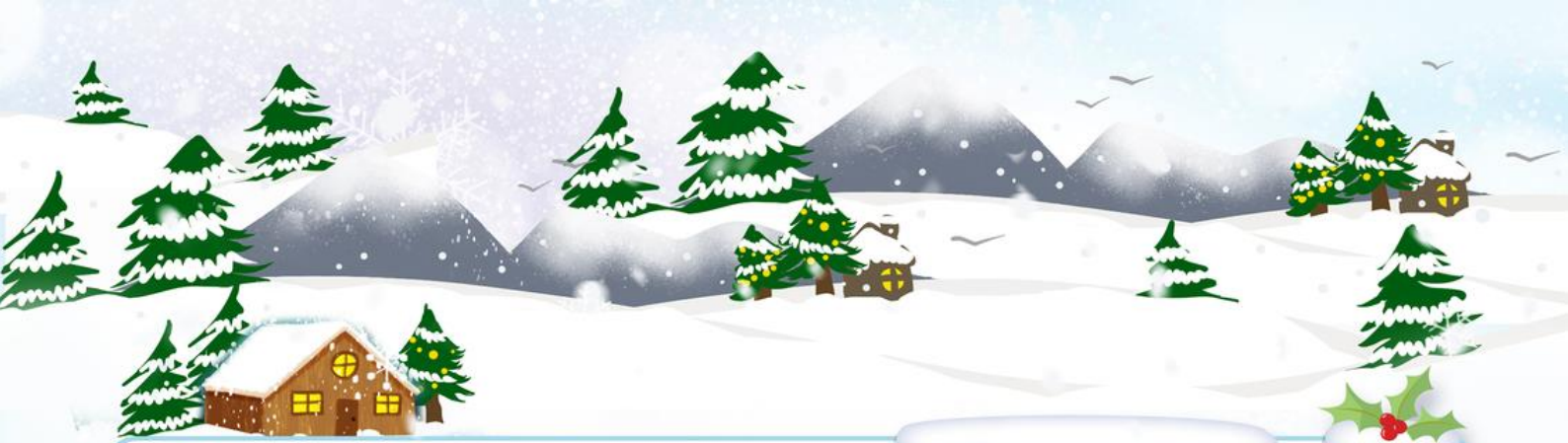


A. Fill in the gaps in the sentences with the correct preposition from the list below. (10 points)

*down                  under                  on                  between                  in*

1. The girl is putting the red glove \_\_\_\_\_ the big snowman.
2. The big snowman is \_\_\_\_\_ the two children.
3. The child is sledding \_\_\_\_\_ the hill.
4. The lady has her hands \_\_\_\_\_ her pockets.
5. The snowman's scarf is \_\_\_\_\_ its nose.





**B. Write questions about the image using the words given below. (10 points)**

1. WHO \_\_\_\_\_?
2. WHAT (action) \_\_\_\_\_?
3. HOW MANY \_\_\_\_\_?
4. WHICH \_\_\_\_\_?
5. WHY \_\_\_\_\_?

**7. You are Frosty, the snowman, and you usually spend your winter holiday in amazing places. In 100-120 words, please describe your perfect winter holiday that you plan to spend this year. (20 points)**

When writing the text, please answer the questions below:

- How long do you plan your ideal winter holiday to last?
- Where do you plan to spend the winter holiday?
- Who do you plan to spend the winter holiday with?
- What activities do you prefer doing? What about sports?
- Are there any special meals/dishes during this ideal winter holiday?

